





Tonsil Tip







**Figure 3a: Correct**



**Figure 3b: Incorrect**



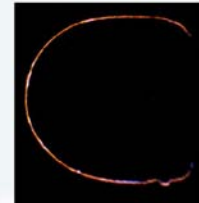
**Figure 3c**

- Refer to Figure 3a for the correct way to bend Adenoid tip; using the thumb as a brace over the gray grip. Do not bend Adenoid tip without bracing, as illustrated in Figure 3b.
- To address adenoid tissue in the choanae, bend tip at distal end (Figure 3c).

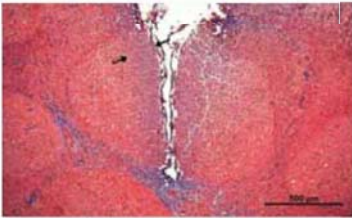




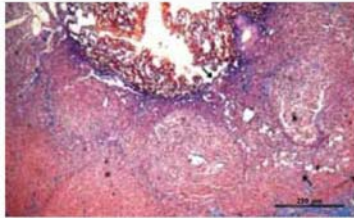
- Thermal Protection Shield
  - PlasmaBlade™ tips: 99.5% insulated (glass insulated), only rim of tips are active
  - Efficient, focused, precise energy delivery
  
- Power
  - PEAK: 15W-50W



**Precision of a scalpel with the hemostatic capabilities of traditional electro-surgery but without collateral tissue damage**



PEAK® Coag Mode:  
Thermal Injury  
Zone ~ 0.49 mm



Electrosurgery  
Cut Mode:  
Thermal Injury  
Zone ~ 1.31 mm

Electrosurgery  
Coag Mode:  
Thermal Injury  
Zone ~ 1.29 mm



